

RACCORDERIA INOX 304 - 316 FILETTATA DA MASSELLO/BARRA

GOMITO 90° FF - AISI316L

ISO228	Ch	L	CODICE
3/4"	35	50	12R316GOM_3/4
1"	40	55	12R316GOM_1"

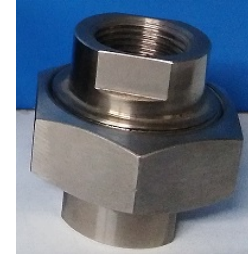
Ultimi articoli sostituiti da microfusione



GIUNTO 3 PEZZI - ISO228 FF - AISI316L

ISO228	Ch	L	CODICE
1/8	32	41	12R316BOC_1/8
1/4	32	41	12R316BOC_1/4
3/8	36	43	12R316BOC_3/8
1/2	46	46	12R316BOC_1/2
3/4	50	52	12R316BOC_3/4
1"	55	56	12R316BOC_1"
1"1/4	70	62	12R316BOC_1"1/4
1"1/2	75	65	12R316BOC_1"1/2
2"	90	75	12R316BOC_2"

Ultimi articoli sostituiti da microfusione



TEE FILETTATO FEMMINA - CROCE FILETTATA FFFF AISI316L

ISO228			CODICE
1/4"	CROCE FFFF		12R316TCRF_1/4
3/4"	50	65	12R316TEE_3/4

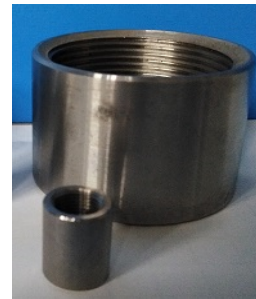
Ultimi articoli sostituiti da microfusione



MANICOTTO FF ISO 228 GAS CILINDRICO FEMMINA AISI316

ISO228			CODICE
1/8			12R316MFF_1/8
1/4			12R316MFF_1/4
3/8	12R304MFF_3/8	6	12R316MFF_3/8
1/2			12R316MFF_1/2
3/4			12R316MFF_3/4
1"			12R316MFF_1"
1"1/4			12R316MFF_1"1/4
1"1/2			12R316MFF_1"1/2
2"			12R316MFF_2"
2"1/2			12R316MFF_2"1/2

Disponibili con filettatura NPT



PROLUNGA MASCHIO ISO228 CILINDRICO- FEMMINA ISO7 CONICA

1/2		12R316TRPR_1/2X1/2
-----	--	--------------------



MEZZO TRONCHETTO ISO7 GAS CONICO MASCHIO - SALDARE DI TESTA AISI316L

ISO7	A X Th	M	L	CODICE
1/8	12x3	10	20	12R316TR_1/8
1/4	14x2	11	25	12R316TR_1/4
3/8	18x4	13	28	12R316TR_3/8
1/2	21,34x2,77	15	30	12R316TR_1/2
3/4	28x4	17	40	12R316TR_3/4
1"	35x5	22	40	12R316TR_1"
1"1/4	42x4	24	40	12R316TR_1"1/4
1"1/2	50x5	25	46	12R316TR_1"1/2
2"	60x5	28	60	12R316TR_2"
2"1/2	75x5,5	32	60	12R316TR_2"1/2
3"	90x7	35	60	12R316TR_3"
4"	114x8,5	40	60	12R316TR_4"

Disponibili con filettatura M NPT



SATEMA

13856 VIGLIANO B.SE - Via Milano, 395

Tel. +39 015811102 - Fax 0158853029

Mail: info@satema.it <http://www.satema.it>

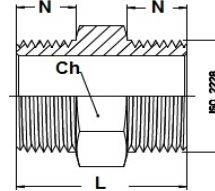
12_146_1

RACORDERIA INOX 304 - 316 FILETTATA DA MASSELLO/BARRA

NIPPO MASCHIO GAS ISO 228 CILINDRICO AISI316L

ISO228XISO228	N	Ch	L	CODICE
1/8	8	10	20	12R316NIP_1/8
1/4	10	11	25	12R316NIP_1/4
3/8	10	13	28	12R316NIP_3/8
1/2	12	15	30	12R316NIP_1/2
3/4	14	17	40	12R316NIP_3/4
1"	16	22	40	12R316NIP_1"
1"1/4	21	24	40	12R316NIP_1"1/4
1"1/2	21	25	46	12R316NIP_1"1/2
2"	22	28	60	12R316NIP_2"
2"1/2	24	32	60	12R316NIP_2"1/2
3"	25	35	60	12R316NIP_3"

Disponibili con filettatura NPT



NIPPO RIDOTTO ISO 228 MASCHIO CILINDRICO AISI316L

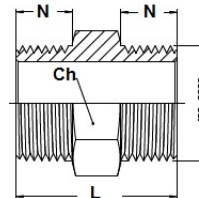
ISO228XISO228	P	N	Ch	L	CODICE
1/4X1/8	10	8	14	24	12R316NIPR_1/8x1/4
3/8X1/4	10	10	17	27	12R316NIPR_3/8x1/4
1/2X1/4	12	10	22	32	12R316NIPR_1/2X1/4
1/2X3/8	12	10	22	32	12R316NIPR_1/2X3/8
3/4X3/8	14	10	27	36	12R316NIPR_3/4X3/8
3/4X1/2	14	12	27	38	12R316NIPR_3/4X1/2
1"X1/4	16	10	36	40	12R316NIPR_1"X1/4
1"X1/2	16	12	36	42	12R316NIPR_1"X1/2
1"X3/4	16	14	36	44	12R316NIPR_1"X3/4
1"1/4X1"	21	19	46	54	12R316NIPR_1"1/4X1"
2"X3/4	22	17	61	54	12R316NIPR_2"X3/4
2"X1"	22	19	61	56	12R316NIPR_2"X1"
2"1/2X2"	25	22	80	67	12R316NIPR_2"1/2X2"
3"X2"	25	22	90	67	12R316NIPR_3"X2"
3"X2"1/2	25	25	90	70	12R316NIPR_3"X2"1/2
4"X3"	25	25	115	70	12R316NIPR_4"X3"

Disponibili con filettatura NPT

NIPPO MASCHIO ISO7 GAS CONICO AISI316L

ISO7	N	Ch	L	CODICE
1/8	8	14	22	12R316NIPCO08CO08
1/4	13	14	33	12R316NIPCO10CO10
3/8	13	17	34	12R316NIPCO11CO11
1/2	15	22	39	12R316NIPCO15CO15
3/4	17	27	44	12R316NIPCO20CO20
1"	19	36	50	12R316NIPCO25CO25
1"1/4	21	46	56	12R316NIPCO32CO32
1"1/2	22	50	58	12R316NIPCO40CO40
2"	25	65	66	12R316NIPCO50CO50
2"1/2	30	80	80	12R316NIPCO65CO65

Disponibili con filettatura NPT



SATEMA

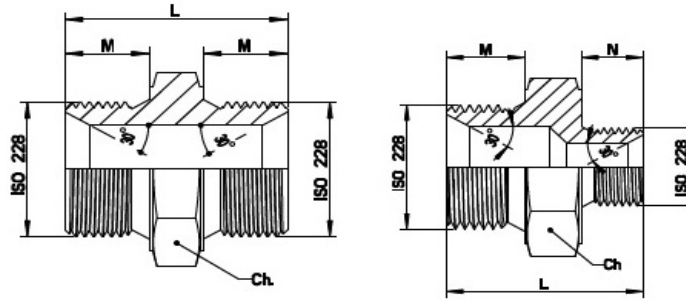
13856 VIGLIANO B.SE - Via Milano, 395

Tel. +39 015811102 - Fax 0158853029

Mail: info@satema.it <http://www.satema.it>

12_146_2

RACORDERIA INOX 304 - 316 FILETTATA DA MASSELLO/BARRA



NIPPO OGIVA MASCHIO CILINDRICO ISO228 - ACCIAIO INOX AISI316L

ISO228XISO228	M	N	Ch	L	
1/8X1/8	8		17	22	12R316NIOG0808
1/4X1/8	11	8	19	26	12R316NIOG1008
1/4X1/4	11		19	29	12R316NIOG1010
3/8X1/8	13	8	22	29	12R316NIOG1108
3/8X1/4	13	11	22	32	12R316NIOG1110
3/8X3/8	13		22	34	12R316NIOG1111
1/2X1/4	15	11	27	35	12R316NIOG1510
1/2X3/8	15	13	27	37	12R316NIOG1511
1/2X1/2	15		27	39	12R316NIOG1515
3/4X1/4	17	11	32	38	12R316NIOG2010
3/4X3/8	17	13	32	40	12R316NIOG2011
3/4X1/2	17	15	32	42	12R316NIOG2015
3/4X3/4	17		32	44	12R316NIOG2020
1"X1/2	19	15	41	48	12R316NIOG2515
1"X3/4	19	17	41	50	12R316NIOG2520
1"X1"	19		41	50	12R316NIOG2525
1"1/4X3/4	21	17	50	52	12R316NIOG3220
1"1/4X1"	21	19	59	54	12R316NIOG3225
1"1/4x1"1/4	21		50	56	12R316NIOG3232
1"1/2X1"1/4	22	21	55	57	12R316NIOG4032
1"1/2X1"1/2	22		55	58	12R316NIOG4040
2"X1"1/4	25	20	70	64	12R316NIOG5032
2"X1"1/2	25	22	70	66	12R316NIOG5040
2"X2"	25		70	69	12R316NIOG5050
2"1/2x2"1/2	30		85	80	12R316NIOG6565
3"x3"	30		100	82	12R316NIOG8080
4"x4"	30		120	82	12R316NIOGA0A0

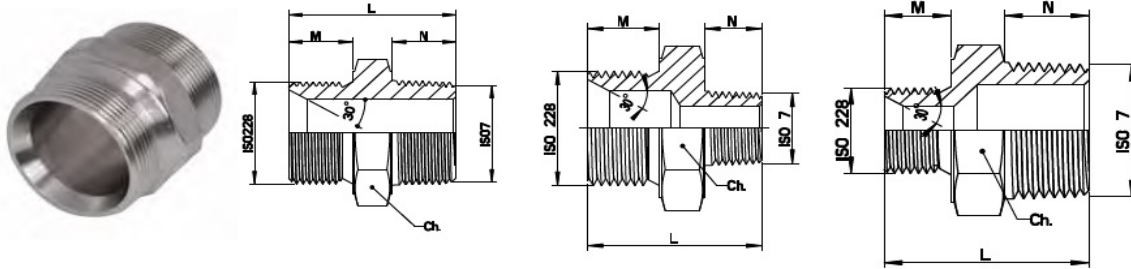


SATEMA

13856 VIGLIANO B.SE - Via Milano, 395
 Tel. +39 015811102 - Fax 0158853029
 Mail: info@satema.it <http://www.satema.it>

12_146_3

RACORDERIA INOX 304 - 316 FILETTATA DA MASSELLO/BARRA



NIPPO OGIVA MASCHIO CONICO ISO7 - ACCIAIO INOX AISI316L

ISO228 X ISO 7	M	N	Ch	L	
1/8X1/8	8	8	17	22	12R316NIOG08CO08
1/8X1/4	8	11	17	25	12R316NIOG08CO10
1/8X3/8	8	13	17	28	12R316NIOG08CO11
1/4X1/8	11	10	19	28	12R316NIOG10CO08
1/4X1/4	11	11	19	29	12R316NIOG10CO10
1/4X3/8	11	13	19	31	12R316NIOG10CO11
1/4X1/2	11	15	22	34	12R316NIOG10CO15
3/8X1/8	13	10	22	31	12R316NIOG10CO08
3/8X1/4	13	11	22	31	12R316NIOG10CO11
3/8X3/8	13	13	22	34	12R316NIOG10CO10
3/8X1/2	13	15	22	36	12R316NIOG10CO15
1/4X3/4	11	17	27	38	12R316NIOG10CO20
3/8X3/4	13	17	27	38	12R316NIOG10CO20
1/2X1/4	15	11	27	35	12R316NIOG15CO10
1/2X3/8	15	13	27	37	12R316NIOG15CO11
1/2X1/2	15	15	27	39	12R316NIOG15CO15
1/2X3/4	15	17	27	42	12R316NIOG15CO20
1/2X1"	15	19	36	46	12R316NIOG15CO25
3/4X3/8	17	13	32	38	12R316NIOG20CO11
3/4X1/2	17	15	32	42	12R316NIOG20CO15
3/4X3/4	17	17	32	44	12R316NIOG20CO20
3/4X1"	17	19	36	48	12R316NIOG20CO32
3/4X1"1/4	17	21	46	50	12R316NIOG20CO40
1"X1/2	19	15	41	46	12R316NIOG25CO15
1"X3/4	19	17	41	48	12R316NIOG25CO20
1"X1"	19	19	41	50	12R316NIOG25CO25
1"X1"1/4	19	21	46	50	12R316NIOG25CO32
1"X1"1/2	19	22	50	55	12R316NIOG25CO40
1"1/4X3/4	21	17	50	52	12R316NIOG32CO20
1"1/4X1"	21	19	50	54	12R316NIOG32CO25
1"1/4X1"1/4	21	21	50	56	12R316NIOG32CO32
1"1/4X1"1/2	21	22	50	57	12R316NIOG32CO40
1"1/4X2"	21	25	65	62	12R316NIOG32CO50
1"1/2X3/4	22	17	55	53	12R316NIOG40CO20
1"1/2X1"	22	19	55	55	12R316NIOG40CO25
1"1/2X1"1/4	22	19	55	57	12R316NIOG40CO32
1"1/2X1"1/2	22	22	55	58	12R316NIOG40CO40
1"1/2X2"	22	25	65	63	12R316NIOG40CO50
2"X1"1/4	25	21	70	65	12R316NIOG50CO32
2"X1"1/2	25	22	70	66	12R316NIOG50CO40
2"X2"	25	25	65	66	12R316NIOG50CO50
2"X2"1/2	25	30	80	74	12R316NIOG50CO65
2"1/2X2"1/2	30	30	85	80	12R316NIOG65CO65



SATEMA

13856 VIGLIANO B.SE - Via Milano, 395

Tel. +39 015811102 - Fax 0158853029

Mail: info@satema.it <http://www.satema.it>

12_146_4

RACCORDERIA INOX 304 - 316 FILETTATA DA MASSELLO/BARRA

TAPPO MASCHIO ISO7 CONICO AISI316

ISO7		CODICE
1/8		12R316TAM_1/8
1/4		12R316TAM_1/4
3/8		12R316TAM_3/8

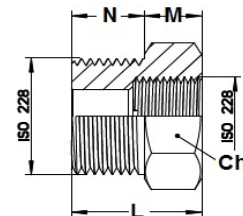
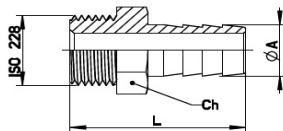


Dimensioni fino a 2"1/2

Disponibili con filettatura NPT

RIDUZIONE MASCHIO PER FEMMINA ISO 228 CILINDRICO AISI316

ISO228 Mx F	N	M	Ch	L	CODICE
1/4X1/8					12R316RI_1/8x1/4
3/8x1/8					12R316RI_3/8x1/8
3/8X1/4					12R316RI_3/8x1/4
1/2x1/8	14	10	27	20	12R316RI1/2X1/8
1/2X1/4					12R316RI_1/2X1/4
1/2X3/8					12R316RI_1/2X3/8
3/4x1/4	17	16	32	27	12R316RI_3/4X1/4
3/4X3/8	17	17	32	27	12R316RI_3/4X3/8
3/4X1/2	17	18	32	27	12R316RI_3/4X1/2
1"X1/4	19	16	36	31	12R316RI_1"X1/4
1"x3/8	19	17	36	31	12R316RI_1"X3/8
1"X1/2	19	18	36	34	12R316RI_1"X1/2
1"X3/4			36		12R316RI_1"X3/4
1"1/4x1/2"	20	18	46	35	12R316RI_1"1/4X1/2
1"1/4x3/4	20	19	46	35	12R316RI_1"1/4X3/4
1"1/4X1"	20	20	46	35	12R316RI_1"1/4X1"
1"1/2x1"	20	20	50	35	12R316RI_1"1/2X1"
1"1/2x1"1/4	20	20	50	35	12R316RI_1"1/2X1"1/4
2"x1/2	23	18	66	35	12R316RI_2"X1/2
2"X3/4	23	19	66	35	12R316RI_2"X3/4
2"1/2X1"1/2	24	22	76	39	12R316RI_2"1/2X1"1/2
2"1/2X2"	24	22	76	39	12R316RI_2"1/2X2"
3"X2"	25	25	90	40	12R316RI_3"X2"
3"X2"1/2	25	25	90	40	12R316RI_3"X2"1/2
4"X2"	32	22	120	57	12R316RI_4"X2"



PORTAGOMMA GAS ISO 228 AISI316

ISO228	Tubo mm	L	Ch	CODICE
1/8"	11	42	14	12R316POR_1/8x11
1/2"	20	62	22	12R316POR_1/2x20

Altre dimensioni a richiesta

CONTRODADO FILETTO GAS ISO 228 AISI 304

ISO228				CODICE
3/8"				12R304CONTRODADO_3/8
1/2"				12R304CONTRODADO_1/2



SATEMA

13856 VIGLIANO B.SE - Via Milano, 395

Tel. +39 015811102 - Fax 0158853029

Mail: info@satema.it <http://www.satema.it>

12_146_5